

# HERO QUEST™

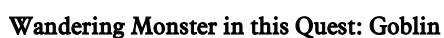
The Eyes of Chaos

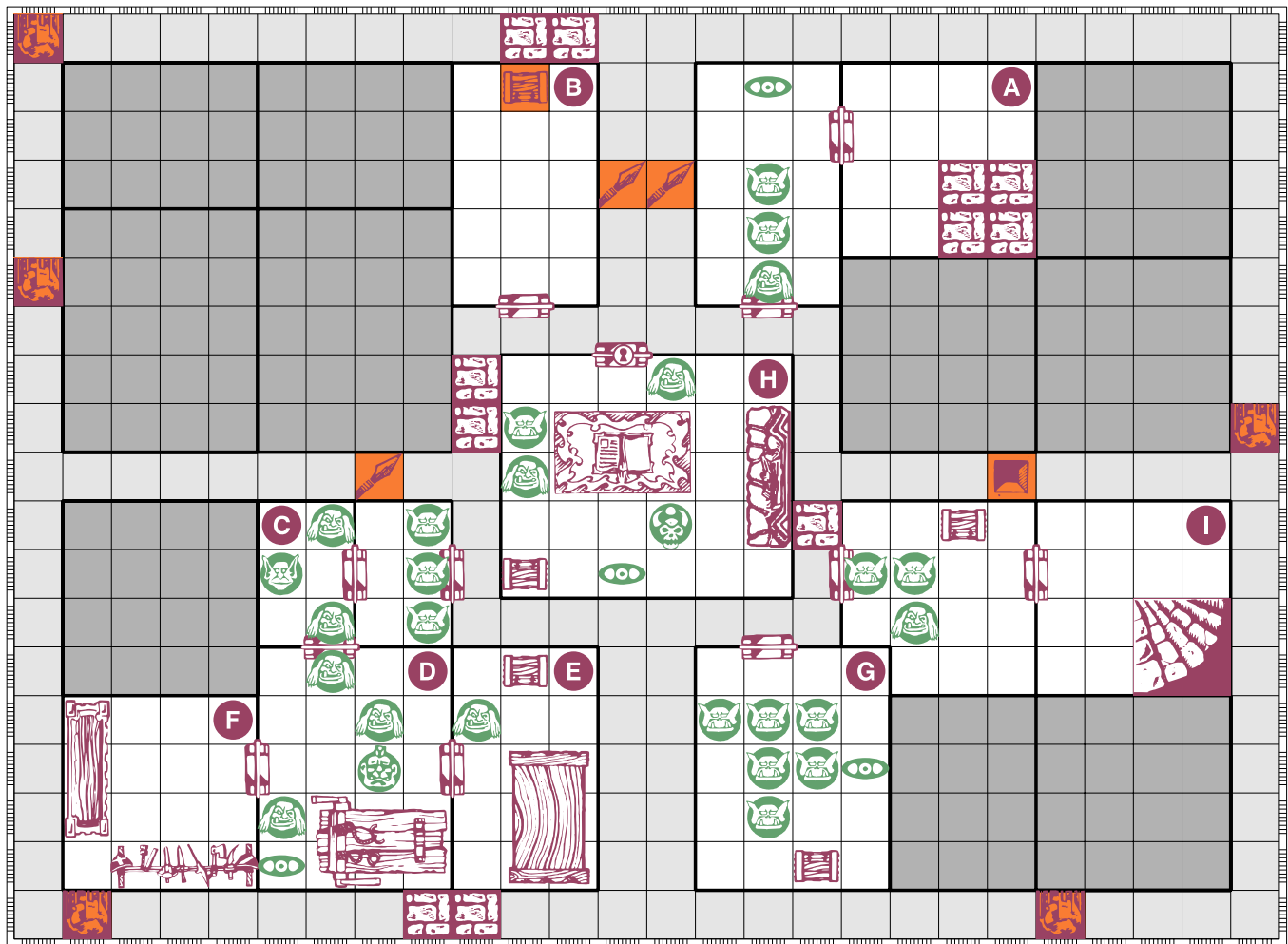
Q U E S T



B O O K







## Quest 2

# The Deep Catacombs

### NOTES:

- A Entry Room**  
The Heroes begin their exploration of the catacombs in this room. The rock filled area represents the trapped staircase that has just collapsed behind them.
- B False Chest Trap**  
This trap has been left for the unwary! As soon as the lid is opened, the door to this room shuts automatically and is jammed. Stinking, reeking acid fumes cloud into the room from a huge smashed glass vial within the chest. To break down the door, the Heroes must smash it and roll a total of three or more skulls on attack dice. Each time they are unsuccessful or fail to do anything, any Hero inside the room loses 1 Body Point automatically.
- C Ogre Guards**  
The Goblin here carries a crossbow and so rolls 3 attack dice, but the crossbow is so badly made that no Hero would be able to use it.
- D The Ogre Chieftain and Horde**  
The Ogre Chieftain in this room has a glowing red sword which flashes light in the same way as the Eye of Chaos. Until he is killed, the Ogre Chieftain may re-roll any one combat dice (attack or defense) of Zargon's choice from his full set of rolls. The Eye of Chaos may also 'steal' a spell from a Wizard or Elf Hero in the normal way.

The Rack here has some clothes and sacking scattered about it from the

Ogres' torture of a poor human victim. If the Heroes search this pile, they may draw a Treasure Card.

- E Treasure Room**  
The huge, ugly Ogre who fights in this room is the Ogre Chieftain's trusted Lieutenant. The treasure chest here allows the Heroes to draw two Treasure Cards, and also allows the Wizard or Elf Hero to take one spell card of his own choice because a magical scroll is among the treasures (from his own set of spells; if he hasn't cast any spells yet, he doesn't get this.) Lastly, this chest contains a huge Brass Key, which is the only way to open the door to room H.
- F Store Room**  
This room contains all kinds of mildewed stores hoarded by the Ogres – spare clubs, rocks, rancid meat, moldy cheeses, sacks of rubbish and the like. If the cupboard is opened, it triggers a spear trap from inside it. The spear trap is spring-loaded and the Hero opening the cupboard must roll two combat dice and lose 1 Body Point for each skull rolled. Inside the cupboard is a bag with 80 gold coins. The weapon rack contains a Spear which may be taken and used by the Heroes.
- G Orc Nest**  
The three Orcs behind the front three all have crossbows from which they fire red-tipped crossbow bolts. The tips glow in the same way as the Eye of Chaos does. The Eye of Chaos here doesn't steal any spells, but it adds 1 to the attack dice total for Orcs using crossbows within this room.

### Wandering Monster in this Quest:

All wandering Monsters in the lower level are Orcs, unless you roll 6 on a normal dice in which case they are Ogres.

## NOTES continued:



### **Lair of the Chaos Sorcerer**

This is the evil genius who is behind the Ogres! The elements of the room are:

**Ogres.** These are normal Ogres.

**Orc.** The Orc has a crossbow as well as a normal hand weapon.

**The Chaos Sorcerer.** Each time a spell is cast against him, roll two combat dice. If the Chaos Sorcerer rolls a shield on either dice, the spell does not affect him. The Chaos Sorcerer has a set of the three Fire Spells to begin the combat here. He also has a bottle of magical green liquid which he can drink, instead of attacking, at any time. Drinking this allows him to recover 3 Body Points.

**The Eye of Chaos.** The Eye of Chaos here blinks and glows brightly during the whole combat. It adds 1 to the defense dice total for all evil creatures here for the first three rounds of combat, then disappears in a puff of smoke and the fire in the fireplace flares brightly.

**The Treasure Chest.** This allows the Heroes to draw 3 Treasure Cards, and ignore any wandering monster results.

**The Fireplace.** The magical fire glows brightly hot, and hanging above it is a magical fire ruby on a chain. It can be taken by any Hero, but the Hero loses 2 Body Points from heat damage. The fire ruby is worth 200 gold coins.

As soon as the Chaos Sorcerer is killed, the entire room shakes slightly and begins to vibrate. Half a dozen small Eyes of Chaos appear in the room and look about them. They begin slowly to move towards the Heroes. Allow the Heroes time to search the chest, and then they must run (make this clear to them). Rocks begin to fall from the ceiling. The place is falling apart! Little sparks and buzzes of Chaotic magic begin to fly everywhere. The Heroes may now enter up to two rooms they haven't entered before this place collapses completely and kills them all!



### **Exit**

This bare room contains the only set of steps out, which lead to safe haven back in the mountains after a secret trap door at the top of the stairs is lifted open.